

cordstrap

PRODUCT



CORDSTRAP **ANCHORLASH®**



SECURE LIGHT AND MEDIUM WEIGHT CARGO LOADS

AnchorLash® is the versatile solution for light to medium loads. Using the strongest existing anchor points within the container, AnchorLash® can adapt to your specific cargo, whether that's carton boxes, plastic drums, big bags or other soft packaging, providing cargo protection on any modality or route.

Designed to be quick and easy to apply consistently, with color-coded lashing to easily show the order that the pre-cut lashing should be applied and optional snap hooks to further speed up application. It's delivered in packaging that contains everything you need to secure one container, minimising preparation time, so one person can secure a container in minutes helping to reduce load times and costs.

At Cordstrap, we are committed to supporting and driving safety in our industry. The AnchorLash® solution provides CTU Code Compliant cargo protection, supporting your responsibilities when shipping nationally or internationally. We know that each customer has specific requirements, and will therefore work closely with you to understand your business needs, and your cargo variables – type, weight, transport mode, route, so that we can calculate and advise on the best securing solution for you.

SAFE & SECURE

High quality lashing solutions secure cargo to prevent movement within the container, protecting both the cargo and ensuring the safety of everyone involved in the supply chain.



TIME & COST EFFICIENT

Designed to be easy and quick to apply consistently, saving time and cost during loading and application.



COMPLIANT

All Cordstrap lashing solutions are CTU Code compliant and have independent witness verification.



**CORDSTRAP ANCHORLASH® PROTECTS
YOUR CARGO, YOUR PEOPLE
AND YOUR BRAND.**

CORDSTRAP CONTAINER SOLUTIONS: ANCHORLASH® RANGE

	STANDARD	SH (SNAP HOOK)
ANCHORLASH® 105.2	2 pairs of color coded horizontal lashings with stitched loop at the end attach to the container anchor point, and 2 buckles.	2 pairs of color coded horizontal lashings with a snap hook to attach to the container anchor point, and 2 buckles.
ANCHORLASH® 105.3	3 pairs of color coded horizontal lashings with a stitched loop at the end to attach to the container anchor point, and 3 buckles.	3 pairs of color coded horizontal lashings with a snap hook to attach to the container anchor point, and 3 buckles.
ANCHORLASH® 105.4	4 pairs of color coded horizontal lashings with a stitched loop at the end to attach to the container anchor point, and 4 buckles.	4 pairs of color coded horizontal lashings with a snap hook at the end to attach to the container anchor point, and 4 buckles.

AnchorLash® is CTU Code Compliant, certified by MariTerm AB, Eurosafe and DNV-GL witnessed. Your Cordstrap Cargo Securing Expert can advise you on the best solution for your specific requirements. Securing values vary based on cargo type, transport mode and friction factor. For full details of the solution performance, please refer to the commercial specification sheet and MariTerm certificate.

TAILOR THE SOLUTION FOR YOUR SPECIFIC CARGO TYPE

EDGE PROTECTION AND HANG STRAPS KEEP LASHING IN AN OPTIMAL POSITION AND PROTECT PACKAGING.



EdgeBoards
(Soft Packaging)



FlexBoards
(Drums and BigBags)



IBC Protector

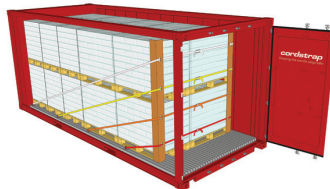


HangStrap

ANCHORLASH® CAN BE USED IN A REEFER CONTAINER WITH A REEFER LASHING POINT



Reefer Lashing Point



USE THE RECOMMENDED TOOLS TO ENABLE EASY, FAST AND CONSISTENT APPLICATION.



Battery Tensioner CBT35



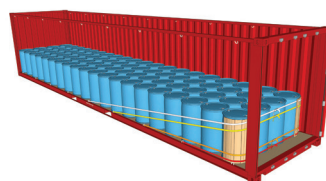
Manual Tensioner CT40 (2)



Container Magnets

These are the recommended tensioners. Other tensioners may also be suitable.

STANDARD LOADING PLANS ARE AVAILABLE FOR DIFFERENT LOAD TYPES.
TAILORED LOADING PLANS ARE AVAILABLE ON REQUEST.



For more information, please visit www.cordstrap.com or contact your Cordstrap Account Manager, who will be able to guide and advise you on the best securing solution for your specific needs.