

***cordstrap***

The Passion to Protect

***cordstrap***

APPLICATIONS AND SOLUTIONS

**THAT ENGINEER  
OUT RISK**

# CONTENTS

	PAGES
The Passion to Protect	03
Container Cargo Solutions	04 – 11
Lashing	12 – 14
CBT 40	16 – 17
CBT 50	18 – 19
Strapping	20 – 22
CBT 35	23 – 25
D-Connect Dunnage Bags	26 – 29
Moisture Control	30 – 32
Training	33
ESG Cordstrap	34
Globally Compliant Solutions	34



CORDSTRAP

# THE PASSION TO PROTECT

Cordstrap has always believed there is a better way. That's why, for over 55 years, we have been dedicated to making the movement of goods safer. We continue to achieve this through a consultative, Protection Engineering approach which is designed to engineer out risk associated with goods that are on the move, enabling businesses to operate with confidence and thrive.

Cordstrap's cargo protection engineers have extensive application expertise in numerous industrial settings, enabling them to diagnose problems, identify opportunities, and develop creative solutions based on best practices, in line with local and global regulations. With this expertise, combined with our innovative and evolving portfolio of solutions, we protect products on the move, the people handling them, and the industrial environments they pass through.

It is our passion to protect that drives us and makes us the global leader in the safe movement of goods.



CORDSTRAP

# CONTAINER CARGO SOLUTIONS

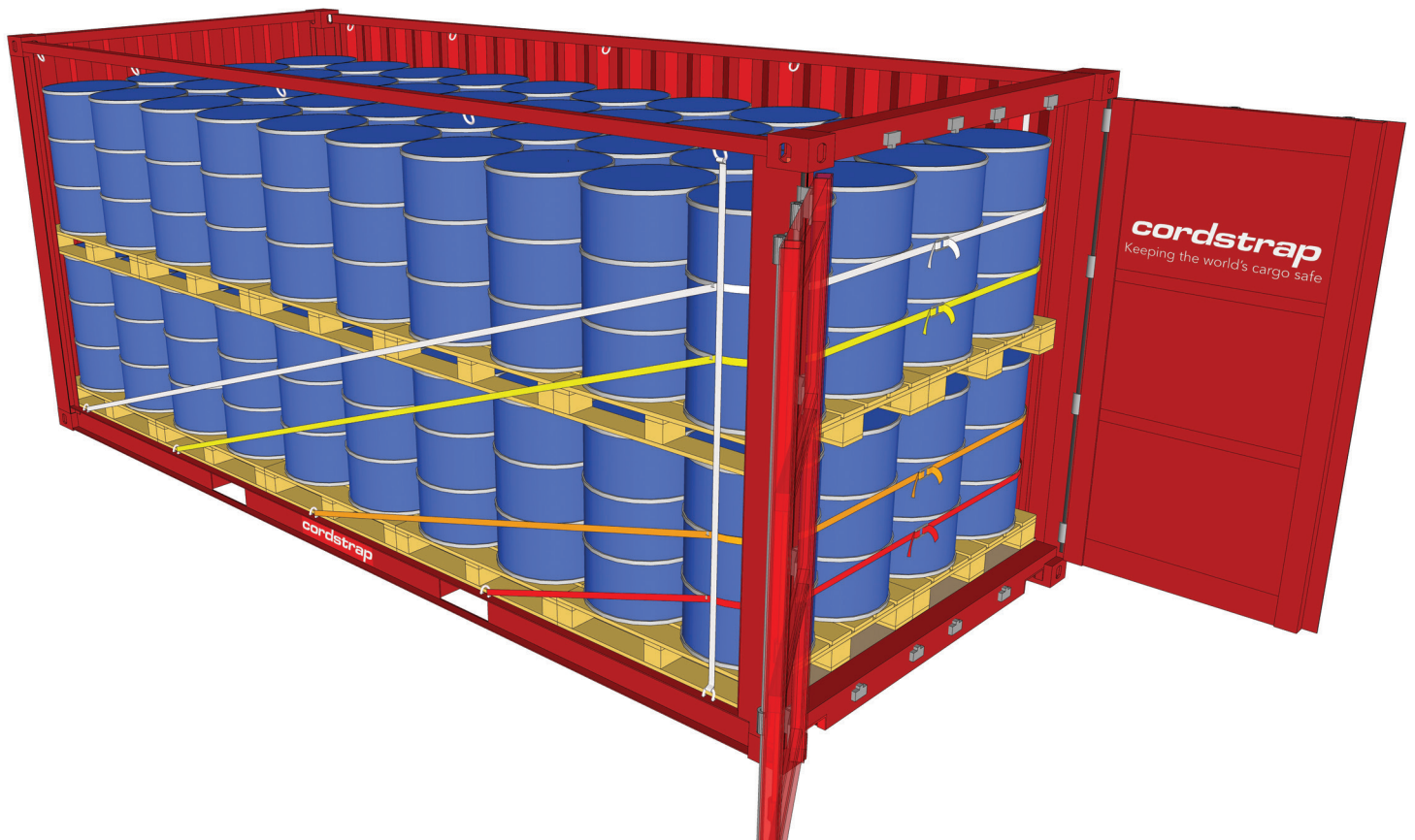
Cordstrap container cargo solutions are the most effective way to secure cargo for international shipping wherever it may be, on any transport unit – containers, flat racks, railcars or ships. Cordstrap lashing eliminates incidents and damage to your cargo.

Safe, cost-effective and time-efficient, Cordstrap's AAR verified and GL certified polyester lashing solutions will safely secure cargo – whatever the conditions, whatever the application, in a CTU compliant manner.

Cordstrap is now introducing breakthrough new solutions specifically designed to secure both heavy and light loads in containers as easily and effectively as possible.

CORDSTRAP

# ANCHORLASH®



## SECURE LIGHT AND MEDIUM WEIGHT CONTAINER CARGO

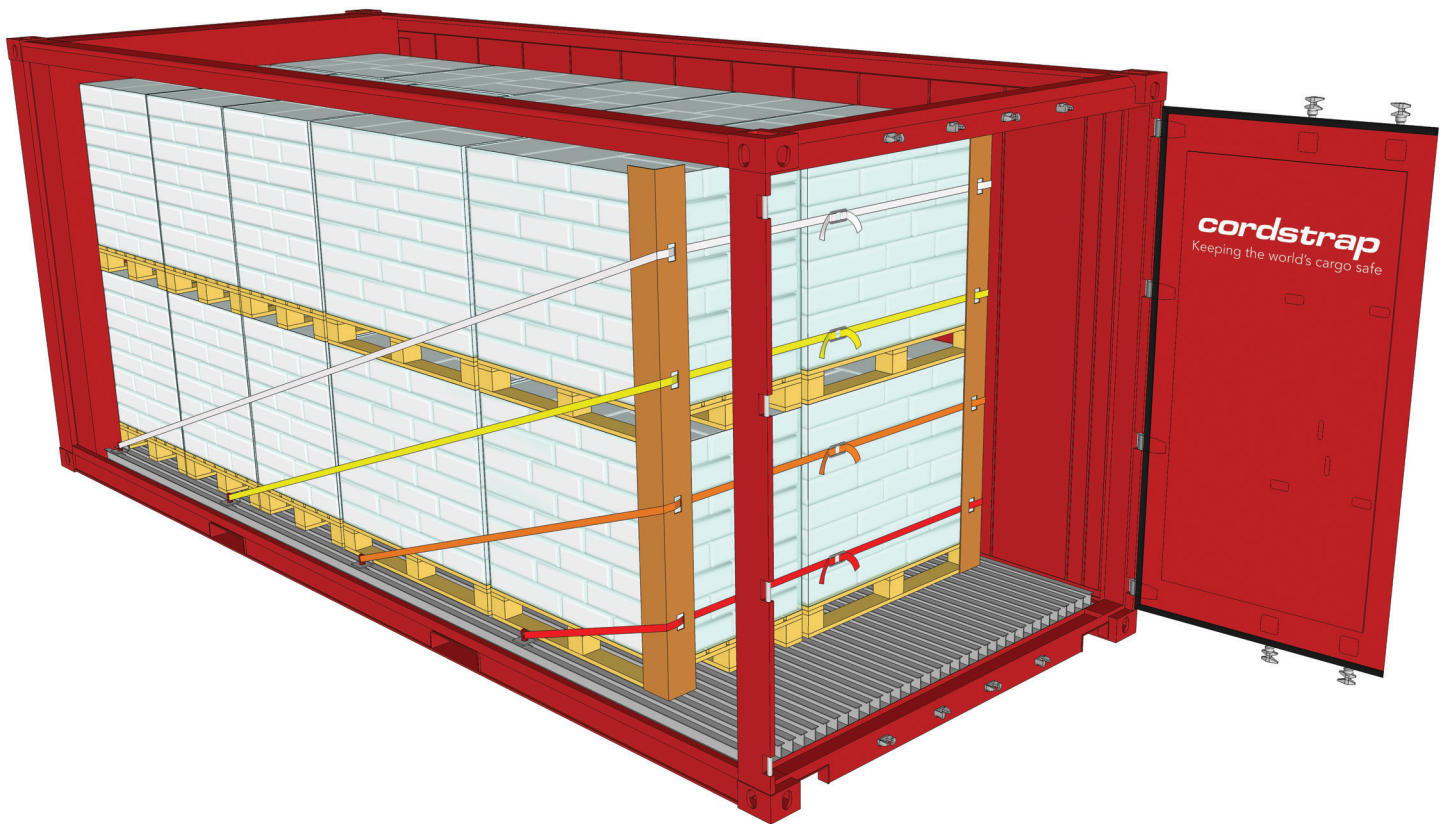
Specifically designed for light and medium-weight loads in containers, AnchorLash® is a versatile solution that can adapt to your requirements. A time and cost efficient solution, AnchorLash secures both hazardous and non-hazardous cargo using the strongest existing container anchor points, within 10 minutes.

Suitable for many types of loads, including carton boxes, plastic drums, big bags, cans and other soft packaging – in both 20 ft and 40 ft containers – AnchorLash® secures cargo in the safest and most efficient way possible.



CORDSTRAP

# ANCHORLASH®



## CORDSTRAP ANCHORLASH® FOR REEFER CONTAINERS

AnchorLash® is the versatile solution for light to medium loads. Its versatility means it can also secure loads in reefer containers using our innovative reefer lashing point which can be applied in just a few seconds and is as strong as the anchor points in non-reefer containers.



## CORDSTRAP CONTAINER SOLUTIONS: ANCHORLASH® RANGE

	STANDARD	SH (SNAP HOOK)
<b>ANCHORLASH® 105.3</b>	3 pairs of colour coded horizontal lashings with a stitched loop at the end to attach to the container anchor point, and 3 buckles.	3 pairs of colour coded horizontal lashings with a snap hook to attach to the container anchor point, and 3 buckles.
<b>ANCHORLASH® 105.4</b>	4 pairs of colour coded horizontal lashings with a stitched loop at the end to attach to the container anchor point, and 4 buckles.	4 pairs of colour coded horizontal lashings with a snap hook at the end to attach to the container anchor point, and 4 buckles.

AnchorLash® is CTU Code Compliant, certified by MariTerm AB, Eurosafe and DNV-GL witnessed. Your Cordstrap Cargo Securing Expert can advise you on the best solution for your specific requirements. Securing values vary based on cargo type, transport mode and friction factor. For full details of the solution performance, please refer to the commercial specification sheet and MariTerm certificate.

## TAILOR THE SOLUTION FOR YOUR SPECIFIC CARGO TYPE

EDGE PROTECTION AND HANG STRAPS KEEP LASHING IN AN OPTIMAL POSITION AND PROTECT PACKAGING.

ELASTIC WOVEN LASHING FOR FLEXIBLE RETAINING.



EdgeBoards  
(Soft Packaging)



FlexBoards  
(Drums and BigBags)



IBC Protector



HangStrap

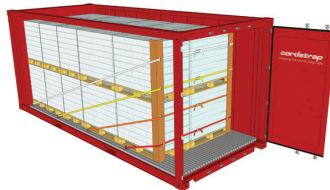


Retainer Buckle  
(Compressible Bulk Loads)

## ANCHORLASH® CAN BE USED IN A REEFER CONTAINER WITH A REEFER LASHING POINT



Reefer Lashing Point



## USE THE RECOMMENDED TOOLS TO ENABLE EASY, FAST AND CONSISTENT APPLICATION.



Battery Tensioner CBT35



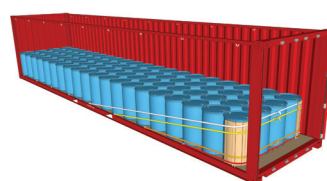
Manual Tensioner CT40 (2)



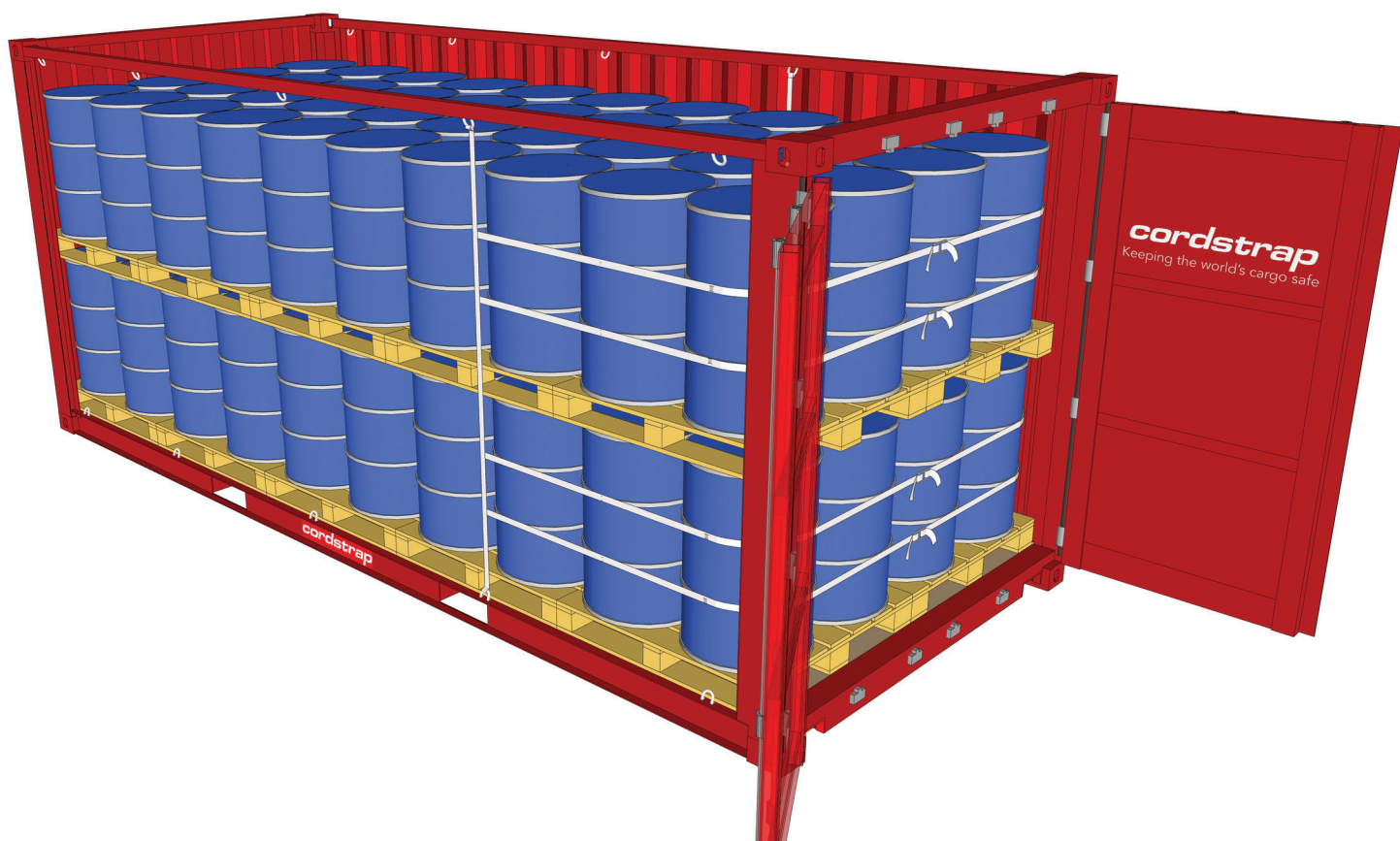
Container Magnets

These are the recommended tensioners. Other tensioners may also be suitable.

STANDARD LOADING PLANS ARE AVAILABLE FOR DIFFERENT LOAD TYPES.  
TAILORED LOADING PLANS ARE AVAILABLE ON REQUEST.



# CORDSTRAP QUICKLASH®



## SECURE LIGHT WEIGHT CONTAINER CARGO

QuickLash® is the economical solution for securing light loads in a container. Designed to provide quick and easy securing and to prevent fall out when opening the container doors.

Suitable for a range of cargo types including big bags, drums and carton boxes, QuickLash® offers a cost-effective solution without compromising on quality or safety.





## CORDSTRAP CONTAINER SOLUTIONS: QUICKLASH® RANGE

	SH (SNAP HOOK)	SH R (SNAP HOOK & FLEXIBLE RETAINING)
<b>QUICKLASH® 105.2</b>	2 adjustable horizontal lashings attached to 2 vertical lashings with snap hooks, and 2 buckles.	2 adjustable horizontal lashings with woven elasticated sections, attached to 2 vertical lashings with snap hooks, and 2 buckles.
<b>QUICKLASH® 105.3</b>	3 adjustable horizontal lashings attached to 2 vertical lashings with snap hooks, and 3 buckles.	3 adjustable horizontal lashings with woven elasticated sections, attached to 2 vertical lashings with snap hooks, and 3 buckles.
<b>QUICKLASH® 105.4</b>	4 adjustable horizontal lashings attached to 2 vertical lashings with snap hooks, and 4 buckles.	4 adjustable horizontal lashings with woven elasticated sections, attached to 2 vertical lashings with snap hooks, and 4 buckles.

QuickLash® is CTU Code Compliant, certified by MariTerm AB, Eurosafe and DNV-GL witnessed.

Your Cordstrap Cargo Securing Expert can advise you on the best solution for your specific requirements. Securing values vary based on cargo type, transport mode and friction factor. For full details of the solution performance, please refer to the commercial specification sheet and MariTerm Certificate.

## TAILOR THE SOLUTION FOR YOUR SPECIFIC CARGO TYPE

EDGE PROTECTION KEEPS LASHING IN AN OPTIMAL POSITION AND PROTECTS PACKAGING.



EdgeBoards (Soft Packaging)



FlexBoards (Drums and BigBags)

USE THE RECOMMENDED TOOLS TO ENABLE EASY, FAST AND CONSISTENT APPLICATION.



Battery Tensioner CBT35



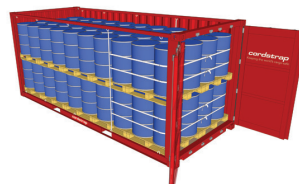
Manual Tensioner CT40 (2)



Container Magnets

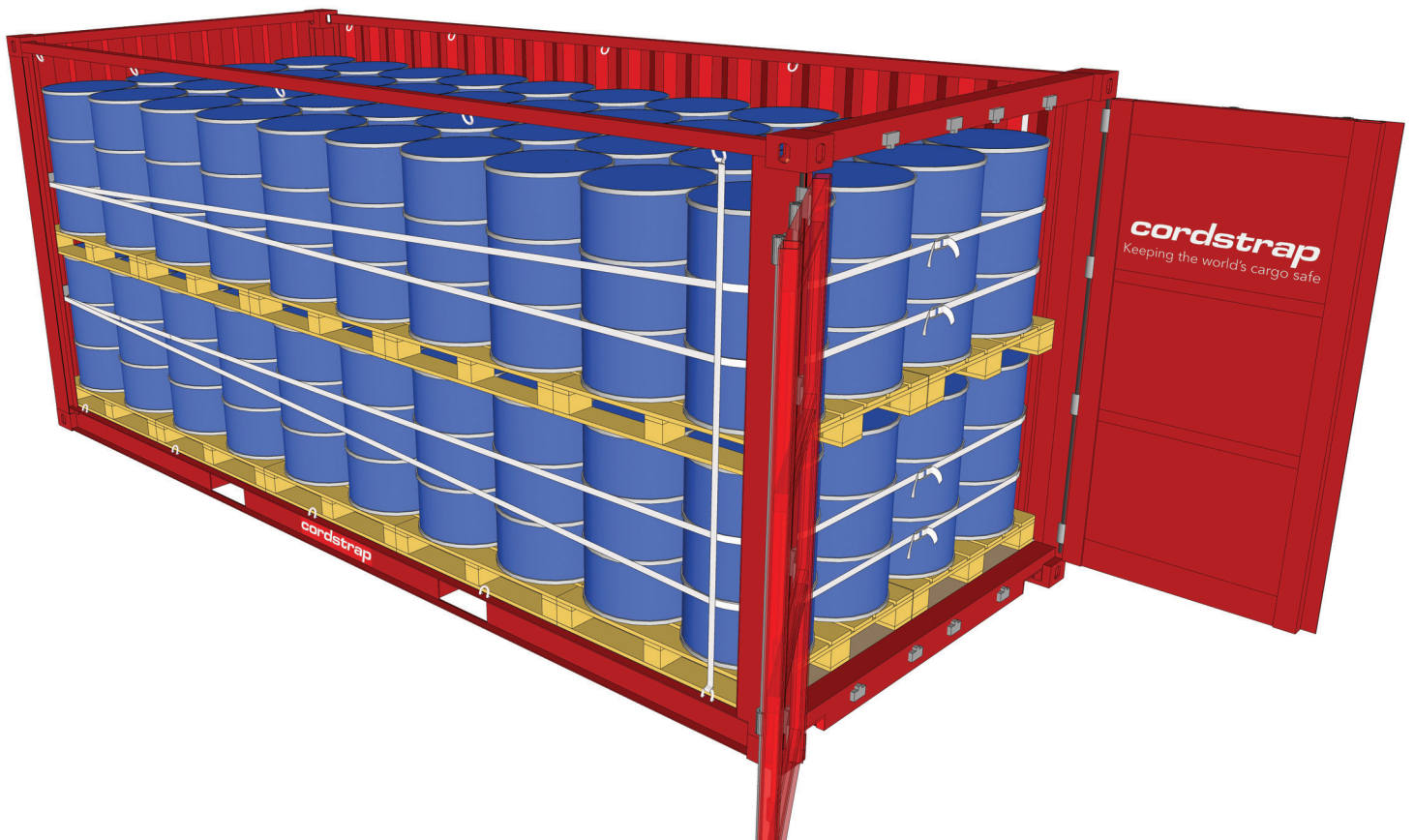
These are the recommended tensioners. Other tensioners may also be suitable.

STANDARD LOADING PLANS ARE AVAILABLE FOR DIFFERENT LOAD TYPES.  
TAILORED LOADING PLANS ARE AVAILABLE ON REQUEST.



CORDSTRAP

# CORNERLASH®



## SECURE HEAVY WEIGHT CONTAINER CARGO

CornerLash® is the fully compliant solution for securing heavy and hazardous loads in containers, within 10 minutes. This innovative solution uses the strongest part of the container – the corner post.

Whether securing drums, IBC's, carton boxes or bags in 20ft or 40ft containers, CornerLash® ensures cargo is secured in the safest and most efficient way possible.



## CORDSTRAP CONTAINER SOLUTIONS: CORNERLASH® RANGE

### CORNERLASH® 105.4

2 pairs of Cordlash® 105 applied through spring loaded corner elements to form 4 horizontal lashings, and 4 buckles.

### CORNERLASH® AAR 200LE

2 pairs of Cordlash® 200LE applied through spring loaded corner elements to form 4 horizontal lashings, and 4 buckles.

CornerLash® is CTU Code Compliant and certified by MariTerm AB, Eurosafe and DNV-GL witnessed. CornerLash® AAR 200LE is approved by AAR. Your Cordstrap Cargo Securing Expert can advise you on the best solution for your specific requirements. Securing values vary based on cargo type, transport mode and friction factor. For full details of the solution performance, please refer to the commercial specification sheet and MariTerm Certificate.

## TAILOR THE SOLUTION FOR YOUR SPECIFIC CARGO TYPE

EDGE PROTECTION AND HANG STRAPS KEEP LASHING IN AN OPTIMAL POSITION AND PROTECT PACKAGING.

ELASTIC WOVEN LASHING FOR FLEXIBLE RETAINING.



EdgeBoards  
(Soft Packaging)



FlexBoards  
(Drums and BigBags)



IBC Protector



HangStrap



Retainer Buckle  
(Compressible Bulk Loads)

USE THE RECOMMENDED TOOLS TO ENABLE EASY, FAST AND CONSISTENT APPLICATION.



Battery Tensioner  
CBT40 (AAR)



Battery Tensioner  
CBT35 (Non-AAR)



Manual Tensioner  
CT40 (2)



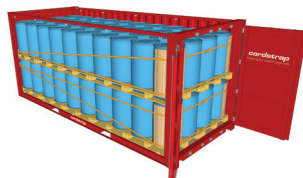
Container Magnets

These are the recommended tensioners. Other tensioners may also be suitable.

STANDARD LOADING PLANS ARE AVAILABLE FOR DIFFERENT LOAD TYPES.  
TAILORED LOADING PLANS ARE AVAILABLE ON REQUEST.



AAR



AAR



Non-AAR



Non-AAR



## CORDSTRAP **LASHING**

Cordstrap lashing, known as Cordlash<sup>®</sup>, is the most effective way to secure cargo for international shipping wherever it may be, on any transport unit – containers, flat racks, railcars or ships.

Cordstrap's polyester one-way lashings have many advantages over conventional securing products such as steel straps, chains or wood blocking and bracing. Cordlash<sup>®</sup> eliminates incidents and damage to your cargo.

Strong, reliable and safe, Cordlash<sup>®</sup> complies fully with the latest rules and regulations. Ensuring that your responsibilities as a shipper are met and that your cargo passes through controls in the logistics chain quickly and without any hold up. Arriving at its destination safely and in perfect condition.

## OPTIMAL SECURITY

Made of high tenacity polyester yarn to ensure maximum strength, Cordlash® has many advantages over conventional products. It ensures that your cargo arrives at its destination in the same condition as when dispatched.

## SAFE

Cordstrap's woven lashing solutions are non-abrasive and safe for both operator and cargo. Optimized lashing and buckle combinations maintain securing function for dynamic and static loads during the most severe transport conditions.

## FULLY CERTIFIED

The quality and performance of our lashing is undisputed as it complies with the latest national and global regulations. It is GL certified, AAR approved and CTU Code compliant.



ASSOCIATION OF  
AMERICAN RAILROADS



## EXPERT SUPPORT

Cordstrap Lashing is fully supported by training and implementation from local cargo securing experts enabling efficiency, standardization and consistency in how your cargo is secured.



# SOLUTIONS SPECIFICATIONS

## COMPOSITE SOLUTIONS

SYSTEM BREAKING STRENGTH*	STRAP TYPE	BUCKLE TYPE	WIDTH	SUITABLE TENSIONERS
2600 daN – 5720 lbf	CC 105/230	CB 10	32 mm / 1.1/4"	CT 40 (Manual) CBT 35 (Battery) CT 35 PN (Pneumatic)
2600 daN – 5720 lbf	CC 105/230 UF	CB 10	32 mm / 1.1/4"	CT 40 (Manual) CBT 35 (Battery) CT 35 PN (Pneumatic)

## WOVEN SOLUTIONS

SYSTEM BREAKING STRENGTH*	STRAP TYPE	BUCKLE TYPE	WIDTH	SUITABLE TENSIONERS
3000 daN – 6600 lbf	Cordlash® 105	HDB 10C	32 mm / 1.1/4"	CT 40 (Manual) CBT 35 (Battery) CT 35 PN (Pneumatic)
4000 daN – 8800 lbf	Cordlash® 105	HDB 10N Dynablock® 10	32 mm / 1.1/4"	CT 40 (Manual) CBT 35 (Battery) CT 35 PN (Pneumatic)
5000 daN – 11000 lbf	Cordlash® 150	HDB 12C	40 mm / 1.5/8"	CT 40 (Manual) CRT 50 (Manual) CT 40 PN (Pneumatic)
6000 daN – 13200 lbf	Cordlash® 150	HDB 12N Dynablock® 12 -150	40 mm / 1.5/8"	CT 40 (Manual) CRT 50 (Manual) CT 40 PN (Pneumatic)
7500 daN – 16500 lbf	Cordlash® 200	HDB 12C	40 mm / 1.5/8"	CRT 50 (Manual) CT 40 PN (Pneumatic)
8500 daN – 18700 lbf	Cordlash® 200	HDB 12N Dynablock® 12 - 200	40 mm / 1.5/8"	CRT 50 (Manual) CT 40 PN (Pneumatic)
10000 daN – 22000 lbf	Cordlash® 750	HDB 15N	50 mm / 2"	CRT 50 (Manual) CT 50 PN (Pneumatic)
12000 daN – 26400 lbf	Cordlash® 750	Dynablock® 15	50 mm / 2"	CRT 50 (Manual) CT 50 PN (Pneumatic)
20000 daN – 44000 lbf	Cordlash® 1500	Dynablock® 20	60 mm / 2.3/8"	CRT 60 (Manual) CT 60 PN (Pneumatic)

All Cordstrap Composite and Woven solutions have been witness tested by Germanischer Lloyd  
For more information about Cordstrap's Container Solutions or Dynamic Cargo Solutions get in touch with one of our Cargo Protection Experts

\*System breaking strength is the total system strength based on the use with recommended Cordstrap buckle type.



# CORDSTRAP CBT 40



## FEATURES OF THE CBT 40

- Designed for durability and outdoor use.
- Motor specified for heavy lashing application.
- Patented auto-stop to avoid motor overload and battery drain.
- Optimal pre-set tension for each Cordstrap Lashing type.
- Patented auto-reverse for easy tool removal from lashing.
- High tensioning speed of up to 54 RPM.
- Up to 150 tensioning cycles per battery.
- Ergonomic design with balanced weight distribution.
- No air line needed.

## BENEFITS

### POWERFUL

Cordstrap's lashing solutions will perform even under extreme circumstances when tensioned with the CBT 40 – with a tension force of up to 1.600 daN / 3,520 lbf, the latest 36V Lithium-Ion battery and brushless motor technology.

### FAST

Click on the battery and your CBT 40 is ready for use. With a solid tensioning performance of up to 150 cycles at a speed of up to 54 rotations per minute, this tool allows for constant fast securing.

### EASY

The patented auto-reverse feature allows for easy removal of the tool from the lashing. Ergonomic design allows for easy one hand operation. And unlike pneumatic tools, CBT 40 doesn't need inconvenient air lines or intensive cleaning and motor maintenance.



# FAST AND EASY TO USE, THE CBT 40 IS SPECIALLY DESIGNED TO SPEED UP YOUR CARGO LOADING PROCESS.

## APPROVED COMBINATIONS

CORDSTRAP LASHING TYPE	CORDSTRAP BUCKLE TYPE
Cordlash® 105	HDB10C, HDB10N, Dynablock® 10, CBH10, CH10
Cordlash® 150	HDB12C, HDB12N, Dynablock® 12, CBH12, CH12
Cordlash® 200	HDB12C, HDB12N, Dynablock® 12, CHB12, CH12
QuickLash®	All variants
AnchorLash®	All variants

CORDSTRAP SOLUTIONS
CornerLash® & CornerLash® AAR

## RECOMMENDED SETTINGS\*

CORDSTRAP LASHING TYPE	SETTINGS
Cordlash® 105, QuickLash®, AnchorLash® 105, CornerLash®	2 - 5 (350 - 875 daN / 770 - 1,925 lbf)
CordLash® 150, AnchorLash® 150	4 - 7 (700 - 1.225 daN/ 1,540 - 2,695 lbf)
Cordlash® 200, CornerLash® AAR	6 - 10 (1.050 - 1.750 daN / 2,310 - 3,850 lbf)

\*Tested under laboratory conditions. Applied tension may vary depending on application.

Recommended settings must be respected for safe use of the tool and safe application of the lashing. Deviating from these settings may result in damage or personal injury. Settings are determined in standardized test set-ups and conditions using a fully charged battery. It remains the responsibility of the operator to check actual tension in the lashing to ensure the recommended pre-tension is achieved.

## PRODUCT SPECIFICATIONS

<b>FORCE</b>		<b>WEIGHT</b>	
Maximum Applied Pre-tension	1.600 daN / 3,520 lbf	Gross Weight	7,5 kg / 16.5 lb (Total weight of case, tool, charger, batteries, power cord)
Torque on Windlass	127 Nm / 1,125 lb-in	Tool Weight	6,2 kg / 13.6 lb
Rotation Speed Windlass (free run)	54 rpm		
<b>POWER SUPPLY</b>		<b>PACKAGING</b>	
Battery Type	Atlas Copco Lithium-Ion Battery	Included as standard	1 case with 1 tool, 1 charger, 2 batteries, 1 power cord and 1 manual
Charging Time	60 - 120 minutes		
Battery Voltage	36 V		
Battery Capacity	2,1 Ah		
Batter Life Indicator	Yes, on battery and on display		
Cycles per Battery	±150		

# CORDSTRAP CBT 50



## FEATURES OF THE CBT 50

- Designed for durability and outdoor use.
- Motor specified for heavy lashing application.
- Patented auto-stop to avoid motor overload and battery drain.
- Optimal pre-set tension for each Cordstrap Lashing type.
- Patented auto-reverse for easy tool removal from lashing.
- High tensioning speed of up to 40 RPM.
- Up to 150 tensioning cycles per battery.
- Ergonomic design with balanced weight distribution.
- No air line needed.

## BENEFITS

### POWERFUL

Cordstrap's lashing solutions will perform even under extreme circumstances when tensioned with the CBT 50 – with a tension force of up to 2.000 daN / 4,400 lbf, the latest 36V Lithium-Ion battery and brushless motor technology.

### CONSISTENT

The patented auto-stop feature avoids motor overload and battery drain. Tool setting can be customized to all Cordstrap lashing types and required pretension, ensuring correct and consistent securing of your products all the time.

### EASY

The patented auto-reverse feature allows for easy removal of the tool from the lashing. Ergonomic design allows for easy one hand operation. And unlike pneumatic tools, CBT 50 doesn't need inconvenient air lines or intensive cleaning and motor maintenance.

# THE CBT 50 IS EASY TO USE AND DELIVERS CONSISTENT TENSIONING. ENSURING THAT YOUR CARGO IS PROPERLY SECURED IN CONTAINERS AND ON RAILCARS, FLAT RACKS AND VESSELS.

## APPROVED COMBINATIONS

CORDSTRAP LASHING TYPE	CORDSTRAP BUCKLE TYPES
Cordlash® 200 Cordlash® 750	HDB12C, HDB12N, Dynablock® 12, CHB12, CH12 HDB15N, Dynablock® 15, CBH15, CDBH15 (all types)
CORDSTRAP SOLUTIONS	
CornerLash® AAR	

## RECOMMENDED SETTINGS\*

CORDSTRAP LASHING TYPE	SETTINGS
Cordlash® 200, CornerLash® AAR	2 - 6 (500 - 1.500 daN / 1,100 - 3,300 lbf)
CordLash® 750	5 - 10 (1.250 - 2.500 daN / 2,750 - 5,500 lbf)

\*Tested under laboratory conditions. Applied tension may vary depending on application.

Recommended settings must be respected for safe use of the tool and safe application of the lashing. Deviating from these settings may result in damage or personal injury. Settings are determined in standardized test set-ups and conditions using a fully charged battery. It remains the responsibility of the operator to check actual tension in the lashing to ensure the recommended pre-tension is achieved.

## PRODUCT SPECIFICATIONS

<b>FORCE</b>		<b>WEIGHT</b>	
Maximum Applied Pre-tension	2.000 daN / 4,400 lbf	Gross Weight	7,5 kg / 16.5 lb (Total weight of case, tool, charger, batteries, power cord)
Torque on Windlass	170 Nm / 1,500 lb-in	Tool Weight	6,2 kg / 13.6 lb
Rotation Speed Windlass (free run)	40 rpm		
<b>POWER SUPPLY</b>		<b>PACKAGING</b>	
Battery Type	Atlas Copco Lithium-Ion Battery	Included as standard	1 case with 1 tool, 1 charger, 2 batteries, 1 power cord and 1 manual
Charging Time	60 - 120 minutes		
Battery Voltage	36 V		
Battery Capacity	2,1 Ah		
Batter Life Indicator	Yes, on battery and on display		
Cycles per Battery	±150		

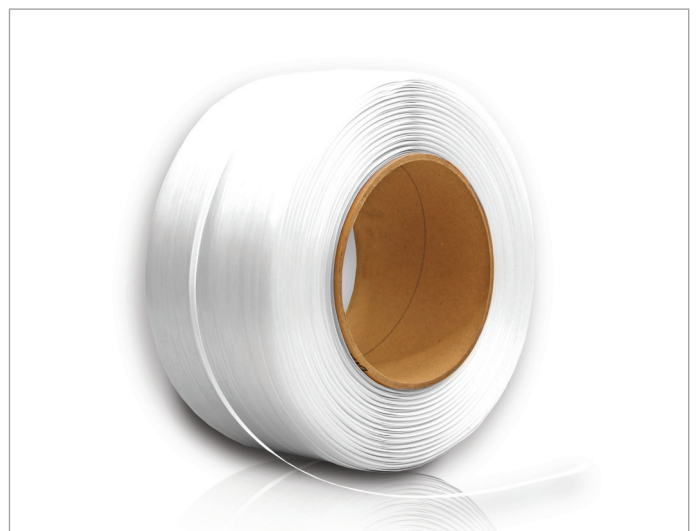


CORDSTRAP

# COMPOSITE STRAPPING

Cordstrap's GL certified composite polyester strapping provides a high quality, reliable and strong solution to securing products of all shapes and sizes for transportation, however heavy, fragile or expensive they may be.

A combination of application expertise and market leading cargo security knowledge allows Cordstrap's experts to demonstrate how best to apply our large range of strapping solutions to your specific cargo securing requirements in the most timely and reliable manner.



## BENEFITS

### STRONG

Cordstrap composite polyester strap, together with a high quality galvanized steel buckle, provides optimal strength in all cargo securing applications and offer excellent performance even under extreme temperatures and circumstances.

### RELIABLE

The combination of Cordstrap straps and buckles provides the most consistent and reliable closing method for securing products, providing true peace of mind for sender and receiver.

### SAFE

Made of non-abrasive material, composite strapping is safe and easy to use. It will not damage products in transit and is safe to apply and remove.



## FEATURES



High securing strength – up to 2600 daN / 5850 lbf.



Extremely high strap and buckle joint efficiency.



Comprehensive range of manual, battery operated and pneumatic tensioners available.



Wide range of accessories to guarantee the best solution for every application.



All Cordstrap Composite Strapping solutions are witness tested by Germanischer Lloyd.

## COMPOSITE STRAPPING

# SOLUTION SPECIFICATIONS

### STANDARD SOLUTIONS

STRAP TYPE	BUCKLE TYPE	MANUAL TENSIONER	BREAKING STRENGTH*	WIDTH
CC 40/2	CB 4 N	CT 20	325 daN / 730 lbf	13mm / 1/2"
CC 40	CB 4	CT 20	480 daN / 1080 lbf	13mm / 1/2"
CC 50/2	CB 5 L	CT 20	400 daN / 900 lbf	16 mm / 5/8"

### MEDIUM SOLUTIONS

STRAP TYPE	BUCKLE TYPE	MANUAL TENSIONER	BREAKING STRENGTH*	WIDTH
CC 50	CB 5	CT 20	680 daN / 1530 lbf	16 mm / 5/8"
CC 55	CB 5 S	CT 20	880 daN / 1980 lbf	16 mm / 5/8"
CC 55 UF	CB 5 S	CT 20	880 daN / 1980 lbf	16 mm / 5/8"
CC 60/2	CB 6 L	CT 20	480 daN / 1080 lbf	19 mm / 3/4"
CC 60	CB 6	CT 20	760 daN / 1710 lbf	19 mm / 3/4"

### HEAVY DUTY SOLUTIONS

STRAP TYPE	BUCKLE TYPE	MANUAL TENSIONER	BATTERY TENSIONER	PNEUMATIC TENSIONER	BREAKING STRENGTH*	WIDTH
CC 65	CB 6 S	CT 25	CBT 35	N/A	1000 daN / 2250 lbf	19 mm / 3/4"
CC 65 UF	CB 6 S	CT 25	CBT 35	N/A	1000 daN / 2250 lbf	19 mm / 3/4"
CC 69	CB 6 XHD	CT 40	CBT 35	N/A	1440 daN / 3240 lbf	19 mm / 3/4"
CC 69 UF	CB 6 XHD	CT 40	CBT 35	N/A	1440 daN / 3240 lbf	19 mm / 3/4"
CC 85/4	CB 8 L	CT 40	CBT 35	N/A	1000 daN / 2250 lbf	25 mm / 1"
CC 85	CB 8	CT 40	CBT 35	N/A	1250 daN / 2810 lbf	25 mm / 1"
CC 85 UF	CB 8	CT 40	CBT 35	N/A	1250 daN / 2810 lbf	25 mm / 1"
CC 86	CB 8	CT 40	CBT 35	CT 35 PN	1500 daN / 3370 lbf	25 mm / 1"
CC 86 UF	CB 8	CT 40	CBT 35	CT 35 PN	1500 daN / 3370 lbf	25 mm / 1"
CC 89	CB 8	CT 40	CBT 35	CT 35 PN	2080 daN / 4680 lbf	25 mm / 1"
CC 89 UF	CB 8	CT 40	CBT 35	CT 35 PN	2080 daN / 4680 lbf	25 mm / 1"
CC 105/6	CB 10 L	CT 40	CBT 35	CT 35 PN	1800 daN / 4050 lbf	32 mm / 1.1/4"
CC 105/6 UF	CB 10 L	CT 40	CBT 35	CT 35 PN	1800 daN / 4050 lbf	32 mm / 1.1/4"
CC 105	CB 10	CT 40	CBT 35	CT 35 PN	2600 daN / 5850 lbf	32 mm / 1.1/4"
CC 105 UF	CB 10	CT 40	CBT 35	CT 35 PN	2600 daN / 5850 lbf	32 mm / 1.1/4"

All Cordstrap composite polyester solutions have been witness tested by Germanischer Lloyd  
 Temperature Range Standard, Medium and Heavy Solutions: 5°C - 80°C / 41°F - 176°F  
 Temperature Range Medium and Heavy UltraFlex (UF) Solutions: -20°C - 30°C / -4°F - 86°F

\*Breaking strength is the total system strength based on the use with recommended Cordstrap buckle type.



CORDSTRAP

# CBT 35 BATTERY TENSIONER

The Cordstrap CBT 35 Battery Operated Tensioner is specially designed for use with our heavy-duty polyester strapping. Powerful, reliable, and ergonomic, it allows users of Cordstrap polyester strapping to experience the latest battery-powered technology.

As the global leader in cargo securing, Cordstrap provides reliable and high-strength strapping solutions. Cordstrap composite polyester strapping combined with the CBT 35 Battery Tensioner is the perfect answer to your cargo strapping requirements.



## BENEFITS

### POWERFUL

Cordstrap Strapping will perform even under extreme circumstances when tensioned with the CBT 35 – with a tension force of up to 800 daN, the latest 18 V lithium-ion battery and brushless motor technology.

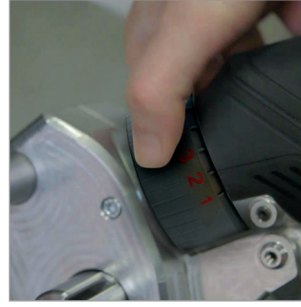
### RELIABLE

Consistent and reliable tensioning no matter how many pallets or bundles are being secured due to 10 clutch settings. Always ready to use, with over 200 strap cycles per battery charge and 2 batteries included as standard.

### EASE OF HANDLING

Cordstrap Strapping can be applied more effectively when using the CBT 35. A balanced one hand operation and the large power button enables quick and easy tensioning of the strap at all times.

## FEATURES



Strong adjustable tension force  
– 10 settings up to 800 daN/1800 lbf.



Fast tensioning up to 100 mm/s – 3.15/16 "/s.



Ergonomically designed handle and balanced one-handed operation.



18 V lithium ion batteries with up to 200 cycles.



Consistent securing reliability when used with Cordstrap Composite strap and buckle.



# CBT 35 BATTERY TENSIONER

## USAGE SPECIFICATIONS

Suitable for strap types	Composite Strap & Woven Lashing
Suitable for Cordlash Woven Widths	30 - 32 mm / 1" - 1.1/4"
Suitable for Cordlash Woven Thicknesses	1,3 - 1,5 mm / 3/64" - 1/16"
Suitable for Cordstrap Composite Widths	19 mm - 32 mm / 3/4" - 1.1/4"
Suitable for Cordstrap Composite Thicknesses	0,85 mm - 1,45 mm / 1/32" - 1/16"
Suitable for bundle diameters	10 - 50 cm / 3.15/16" - 19.11/16"

## PRODUCT SPECIFICATIONS

### FORCE

Tensioning Force	350 - 800 daN/ 790 - 1800 lbf
Adjustable Tension	Yes
Number of Tension Settings	10

### SPEED

Tensioning Speed	100 mm/s - 3.15/16 "/s
Reverse Mode	Yes

### POWER SUPPLY

Battery Type	Bosch Lithium-ion Battery
Charging Time	30 min (EU), 60 min (US)
Battery Voltage	18 V, 4 amp
Batter Life Indicator	Yes
Cycles per Battery	> 200
Charger Type	Bosch Charger
Charger Voltage	220 - 240 V / 120 V

### DIMENSIONS

Length	27 cm - 10.5/8"
Width	11 cm - 4.21/64"
Height	22 cm - 8.21/32"

### WEIGHT INCLUDING BATTERY

4 kg - 8.8 lbs

### COLOUR

Dark Grey, Silver and Red

### SMALL BUNDLE EXTENSION

Accessory designed to secure small bundles from 10 up to 50 cm (3.15/16" - 19.11/16") in diameter

### PACKAGING

Included as standard	1 x Tensioner 2 x Batteries 1 x Charger 1 x Carry Case
----------------------	---

Total packaging weight	7,3 kg / 16.1 lbs
Total packaging dimensions	51 x 45 x 16 cm - 20.5/64 x 1.49/64 x 5/8"



## CORDSTRAP D-CONNECT **DUNNAGE BAGS**

D-Connect dunnage bags are specially designed to secure and stabilize loads of up to 23 tons in containers, closed rail cars, trucks and ships. The D-Connect bag is the most reliable in the market and enables cargo to be secured in an easy and consistent way.

Suitable for many different types of cargo, D-Connect dunnage bag solutions ensure cargo is secured in the safest and most efficient way possible. Direct Connect technology combined with valve positioning on the edge of the bag and solid tooling ensure enhanced safety and speed. A comprehensive tooling range enables inflation of different types and sizes with one single inflator type.

Fully compliant with the latest rules and regulations, D-Connect dunnage bags support your responsibilities as a shipper, ensuring cargo passes through port controls smoothly and arrives at its destination safely and in perfect condition.

Cordstrap D-Connect dunnage bags protect your cargo, your people and your brand.

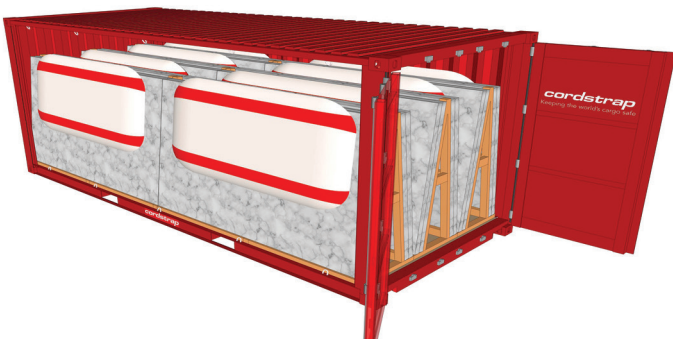


### OPTIMAL SECURITY

Unique lamination ensures superior performance with regard to puncture and moisture resistance, as well as shock absorbency. Production quality meets stringent AQL standards, making this the most reliable bag on the market.

### FAST AND EASY

Inflating a D-Connect dunnage bag takes only 17.5 seconds. This is 20% faster than the current fast inflation solutions on the market.\* A slightly rigid structure makes the bag easy to handle and position between the load.



### FULLY CERTIFIED

All D-Connect dunnage bags are fully CTU compliant and AAR approved.



ASSOCIATION OF  
AMERICAN RAILROADS

### EXPERT SUPPORT

Cordstrap D-Connect dunnage bags are fully supported by training and implementation from local Cordstrap cargo securing experts, enabling standardization and consistency.

\*Based on inhouse testing of a range of 90 x 120 cm market leading bags.

# CORDSTRAP D-CONNECT



## DUNNAGE BAG

## PORTFOLIO

TYPES	AAR LEVEL	WORKING PRESSURE	BURST PRESSURE	AVAILABLE SIZES CM	AVAILABLE SIZES INCHES	SUITABLE INFLATORS
Cargo Stabilizer	N.A	0,1 Bar / 1.45 Psi / 10kPa	0,3 Bar / 4.35 Psi / 30kPa	Width: 60/90/120/150 Length: 60 – 300	Width: 24/36/48/60 Length: 24 – 120	D-Connect Fast Inflator D-Connect Fast Inflator HD D-Connect Extended Inflator D-Connect Battery Inflator D-Connect Digital Fast Inflator D-Connect Electric Inflator HD
Cargo Secure Medium	1	0,2 Bar / 2.9 Psi / 20kPa	0,6 Bar / 8.7 Psi / 60kPa	Width: 60/90/120/150 Length: 60 – 300	Width: 24/36/48/60 Length: 24 – 120	D-Connect Fast Inflator D-Connect Fast Inflator HD D-Connect Extended Inflator D-Connect Digital Fast Inflator
Cargo Secure Medium Plus	1	0,2 Bar / 2.9 Psi / 20kPa	0,6 Bar / 8.7 Psi / 60kPa	Width: 60/90/120/150 Length: 60 – 300	Width: 24/36/48/60 Length: 24 – 120	D-Connect Fast Inflator D-Connect Fast Inflator HD D-Connect Extended Inflator D-Connect Digital Fast Inflator
Cargo Secure Heavy	2	0,4 Bar / 5.8 Psi / 40kPa	1,2 Bar / 17.4 Psi / 207kPa	Width: 60/90/120/150 Length: 60 – 300	Width: 24/36/48/60 Length: 24 – 120	D-Connect Fast Inflator D-Connect Fast Inflator HD D-Connect Extended Inflator D-Connect Digital Fast Inflator
Cargo Secure Heavy Duty	4	0,69 Bar / 10 Psi / 69kPa	2,07 Bar / 30 Psi / 10kPa	Width: 90/120/150 Length: 120 – 300	Width: 36/48/60 Length: 48 – 120	D-Connect High Pressure Inflator
	5	0,69 Bar / 10 Psi / 69kPa	1,45 Bar / 20 Psi / 145kPa			

CORDSTRAP D-CONNECT

# DUNNAGE BAG INFLATORS PORTFOLIO

NAME		INPUT	DESCRIPTION
D-Connect Fast Inflator		Fixed Air Line	<ul style="list-style-type: none"> <li>- Unique venturi technology enables fast inflation</li> <li>- Visual cue that clearly indicates when working pressure of ~0,17 Bar is achieved</li> <li>- The perfect tool for customers using &lt; ~650 bags per year</li> </ul>
D-Connect Fast Inflator HD		Fixed Air Line	<ul style="list-style-type: none"> <li>- Unique venturi technology for fast inflation</li> <li>- Visual cue that clearly indicates when when working pressure of ~0,17 Bar is achieved</li> <li>- Equipped with HD steel collar for heavy use</li> <li>- The perfect tool for customers using &gt; ~650 bags per year</li> </ul>
D-Connect Battery Inflator		Battery	<ul style="list-style-type: none"> <li>- Equipped with powerful pump enabling Fast inflation</li> <li>- This light and ergonomic designed portable inflator can inflate dunnage bags anywhere at any time</li> <li>- The perfect tool for customers where fixed airlines or electricity is not available</li> </ul>
D-Connect Electric Inflator HD		Electric - Mains Lead	<ul style="list-style-type: none"> <li>- Equipped with powerful pump enabling Fast inflation</li> <li>- Equipped with a flexible 14 meter / 46 ft hose for easy inflation in containers and trucks</li> <li>- The perfect tool for customers where electricity is available</li> </ul>
D-Connect Digital Fast Inflator		Fixed Air Line	<ul style="list-style-type: none"> <li>- Unique venturi technology enables fast inflation</li> <li>- Digital pressure readout enables precise inflation</li> <li>- The perfect tool for customers with applications that require precise filling pressure</li> </ul>
D-Connect High Pressure Inflator		Fixed Air Line	<ul style="list-style-type: none"> <li>- Developed specifically for reliable inflation of D-Connect Cargo Secure Heavy Duty bags</li> <li>- Digital pressure readout enables precise inflation</li> <li>- The perfect tool for customers with applications that require precise filling pressure</li> </ul>



## CORDSTRAP

# MOISTURE CONTROL

Products and their packaging run a risk of harm from moisture during shipping that can lead to extensive damage and customer claims. Problems can include corrosion, mold, caking of powders and the deterioration of packaging, including warping and the peeling of labels. Insurers estimate that close to 10% of container shipment losses are caused by moisture damage.

Cordstrap offers customers a 'first time right' approach, delivering application advice, on-site diagnostics and training, supported by latest technology products.

The Cordstrap Moisture Control Portfolio consists of the latest calcium chloride and starch technology to deliver the best absorption available on the market. The use of high performing Tyvek® technology in outer bags guarantees they are tear resistant and leak proof.

## OPTIMAL SECURITY

Cordstrap Moisture Control products offer fast and high absorption with a 'no leakage' guarantee, backed by a risk assessment and advice that guarantees the right solution for every load.

## FAST AND EASY

Our unique Moisture Control Cargo Protection Guide delivers a quick assessment of potential moisture damage. The Cordstrap Cargo Protection Scan ensures substantiated 'first time right' advice on the required solution.

## FULLY CERTIFIED

The Cordstrap Moisture Control Dimensioning Tool ensures that our solution advice is CTU Code and REACH compliant. All components are CAS registered.



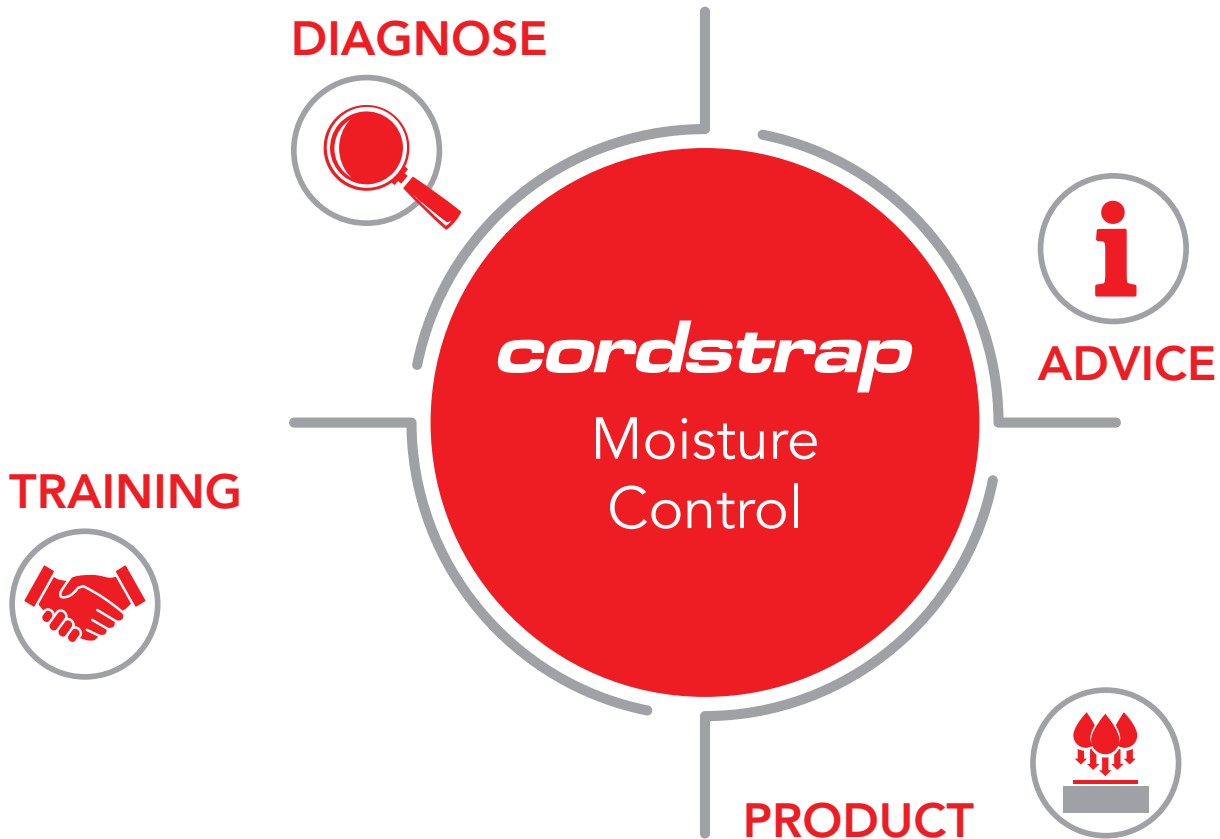
## EXPERT SUPPORT

There are Cordstrap experts in over 50 countries to support jointly agreed implementation and roll out plans. We use a common suite of Moisture Control tools to ensure consistency across your sites globally.



# FOUR STEPS TO ELIMINATE MOISTURE DAMAGE

At Cordstrap we are committed to keeping the world's cargo safe, and that includes eliminating damage caused by moisture during transport. We deliver container moisture control through a unique four-step approach that ensures our partnership with you delivers the protection you need.



## 1. DIAGNOSE

Cordstrap's online Moisture Control Cargo Protection Guide swiftly determines the level of moisture damage cargo could be exposed to. An onsite Cargo Protection Scan using measurement tools and tracking then substantiates this.

## 2. ADVICE

Using the scan results, our Moisture Control Dimensioning Tool identifies the optimal solution to maximize protection with minimal disturbance to loading.

## 3. PRODUCT

Our latest technology products come in a variety of sizes and weights to ensure the optimal solution for your moisture risk. The unique product composition guarantees high absorption and the 'one way only' outer bag enables fast absorption and no leakage or sweat.

## 4. TRAINING

We work in partnership with our customers to develop jointly agreed implementation plans. And support these with tailored application advice and training from Cordstrap experts in over 50 countries.



CORDSTRAP

# MOISTURE CONTROL PORTFOLIO



## CORDSTRAP DRY BAG IN BOX WITH HOOK

Ideal for less tightly packed containers with over 50cm / 20" between cargo and container ceiling. The cardboard casing provides additional protection against shocks.

Hung from the top lashing points in the container.

Weight: 1.5 kg / 3.307 lbs



## CORDSTRAP DRY BLANKET

Ideal for tightly packed (non operating) (reefer) containers with less than 50cm / 20" between cargo and container ceiling.

Placed on top of cargo.

Weight: 2 kg / 4.409 lbs



## CORDSTRAP DRY HOOK HOOK

Ideal for less tightly packed containers with over 50cm / 20" between cargo and container ceiling.

Hung from the top lashing points in the container.

Weight: 1 kg / 2.205 lbs



## CORDSTRAP DRY PAD

Ideal for tightly packed (non operating) (reefer) containers with less than 50cm / 20" between cargo and container ceiling.

The pad has adhesive material to allow positioning on top or sides of cargo.

Weight: 0.5 kg / 1.102 lbs



## CORDSTRAP DRY SACHET

Ideal for tightly packed (non operating) (reefer) containers with less than 50cm / 20" between cargo and container ceiling.

Small size allows positioning on cargo and/or between cargo and pallets.

Weight: 0.125 kg / 0.276 lbs

Absorption capacity: >320% of own weight.

Best in class calcium chloride and starch technology.

High performing Tyvek® technology guarantees no leakage or sweat.

# CORDSTRAP TRAINING

Cordstrap's Cargo Protection Engineers can provide training for your teams across a wide range of topics. They can deliver standardization and consistency of operations with teams working at all locations along your supply chain ensuring compliance for both domestic and international shipments.

Training can be provided on site or remotely and tailored to your exact needs with areas of focus including:

- Identifying the causes and consequences of cargo movement during transport.
- Insight into relevant legislation and regulations, including current CTU Code compliance.
- Theoretical training in cargo securing and cargo calculation methods.
- Intensive hands-on training to apply our solutions in the most optimal way.
- Regular training updates and webinars to ensure that our customers always have the very latest knowledge of cargo protection technology and industry legislation.



# CORDSTRAP ESG

At Cordstrap we are proud that, through our extensive product and solution innovation, we engineer out risk for shippers and manufacturers, globally. By preventing damages, and the subsequent remanufacturing and re-shipping, we mitigate the impact to supply chains, budgets and the environment. Our solutions are also safe to use, protecting people and their working environments. We're committed to making Cordstrap one of the most sustainable companies operating in our industry, maintaining high levels of progress in sustainability performance to ensure a safer, greener, future.

We've delivered significant improvements in our environmental performance by focusing on waste management with projects to encourage reuse and recycling of materials. In addition, we have made strong advancements in reducing our energy consumption and using energy from renewable sources. Furthermore, we are investing in reusable and recyclable cargo securing solutions.

Our ongoing commitment and progression in these areas is gaining momentum and we are delighted to have been awarded a Gold sustainability rating by EcoVadis – the world's leading provider of corporate sustainability ratings. This Gold rating puts Cordstrap in the top 5% of businesses worldwide and in the top 1% of businesses in our industry.



# CORDSTRAP GLOBALLY COMPLIANT SOLUTIONS

Cordstrap products are CTU Code and CSS Code compliant. They are accepted and approved by regulatory bodies including the IMO, AAR, IMDG and DNV. We are fully ISO 9001 certified.



ISO 9001:2015



ASSOCIATION OF  
AMERICAN RAILROADS

CTU CODE

CSS CODE



DNV

# **cordstrap**

The Passion to Protect

## **AMERICAS**

### **USA & CANADA**

t +1 (877) 277-8727

e sales.usa@cordstrap.com

### **MEXICO**

t +52 442 229 1561

e sales.mx@cordstrap.com

### **BRAZIL**

t +55 51 3074 7007

e comercial.cbr@cordstrap.com

## **EUROPE**

### **CZECH REPUBLIC & SLOVAKIA**

t +420 776 772 171

e sales.cz@cordstrap.com

### **FRANCE**

t +33 (0) 3 44258181

e sales.fr@cordstrap.com

### **GERMANY**

t +49 2166 452 5909

e sales.de@cordstrap.com

### **ITALY**

t +39 02 96783625

e sales.it@cordstrap.com

### **THE NETHERLANDS**

t +31 478 519 000

e sales.nl@cordstrap.com

### **POLAND**

t +48 61 652 51 52

e sales.pl@cordstrap.com

### **SPAIN & PORTUGAL**

t +34 93 717 81 72

e comercial@cordstrap.com

### **UNITED KINGDOM**

t +44 (0) 1695 554700

e sales.uk@cordstrap.com

## **MIDDLE EAST**

### **UNITED ARAB EMIRATES**

t + 971 4 8807877

e sales.me@cordstrap.com

## **ASIA PACIFIC**

### **INDIA**

t +91 20 4011 1420

e sales.in@cordstrap.com

### **MALAYSIA & VIETNAM**

t +603 5891 6026

e sales.my@cordstrap.com

### **SINGAPORE**

t +65 689 613 40

e sales.sg@cordstrap.com

### **THAILAND**

t +66 38 110 901

e sales.th@cordstrap.com

If your country is not listed here, please contact your nearest Cordstrap office. We will get in touch by return.