

# Cordstrap AnchorLash®

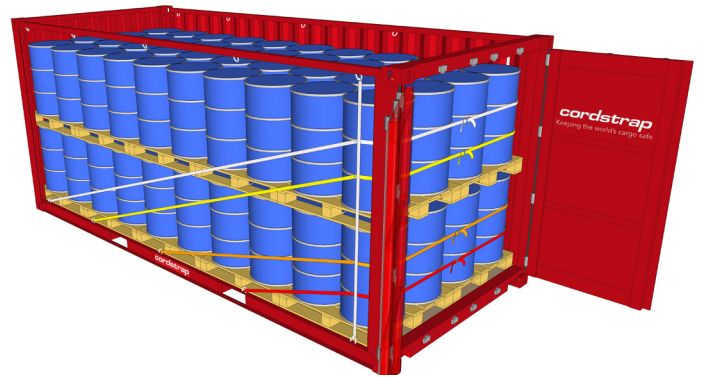
## Secure light and medium weight cargo loads

### CTU Code compliant up to 19 tons

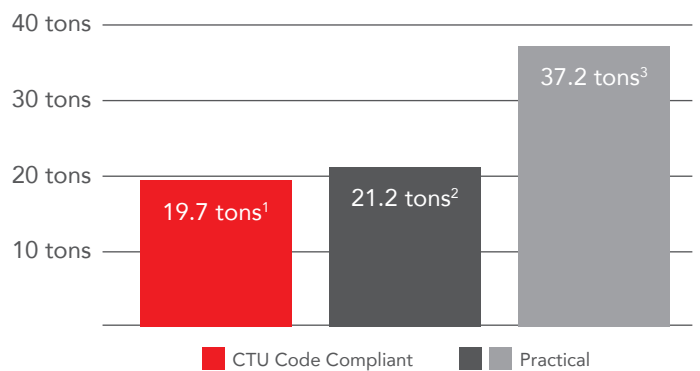
AnchorLash® is the versatile solution for light to medium loads. Using the strongest existing anchor points within the container, AnchorLash® can adapt to your specific cargo, whether that's carton boxes, plastic drums, big bags or other soft packaging, providing cargo protection on any modality or route.

Designed to be quick and easy to apply consistently, with color-coded lashing to easily show the order that the pre-cut lashing should be applied and optional snap hooks to further speed up application. It's delivered in 'per container' packaging that includes everything you need, minimising preparation time, so one person can secure a container in minutes helping to reduce load times and costs.

At Cordstrap, we are committed to supporting and driving safety in our industry. The AnchorLash® solution provides CTU Code Compliant cargo protection, supporting your responsibilities when shipping nationally or internationally. We understand that each customer has specific requirements, and will therefore work closely with you to understand your needs, advising on both compliant and practical securing weights for your cargo type, modality and route.



Example securing weights, certified by MariTerm AB



1. 20ft CTU / friction factor: 7.7 / Intermodal (sea area C) / Soft Drums
2. 20ft CTU / friction factor: 7.7 / Intermodal (sea area C) / Soft Drums
3. 20ft CTU / friction factor: 4.5 / Road & Rail (doors to rear) / Soft Drums

Cordstrap AnchorLash® protects your cargo, your people and your brand



#### SAFE & SECURE

High quality lashing solutions secure cargo to prevent movement within the container, protecting both the cargo and ensuring the safety of everyone involved in the supply chain.



#### TIME & COST EFFICIENT

Designed to be easy and quick to apply consistently, saving time and cost during loading and application.



#### COMPLIANT

All Cordstrap lashing solutions are CTU Code compliant and have independent witness verification.

# Specifications Cordstrap Container Solution: Cordstrap AnchorLash®

## Solution Performance Specifications

Solution Breaking Strength\* 12.000 daN / 26,455 lbf (±10%)  
 Solution MSL 9.000 daN / 219,814 lbf (±10%)

**Certification** Maritern, Eurosafe, DNV-GL witnessed

These figures are based on correct application of the complete solution with anchorpoints that have 2.000 daN / 4,400 lbf MSL and can vary based on application and length/angle of lashing. Please refer to securing certificates for exact values.



## Edge protection and HangStrap: used to keep the lashing in an optimal position and fully protect your cargo



Retainer Buckle



EdgeBoards  
(soft packaging)



FlexBoards  
(drums and big bags)



IBC Protector



HangStrap

## Edge protection can be used in a reefer container with a Reefer Lashing Point



Reefer Lashing Point



## Use the recommended tools to enable easy, fast and consistent application



Manual Tensioner  
CT40 (2)

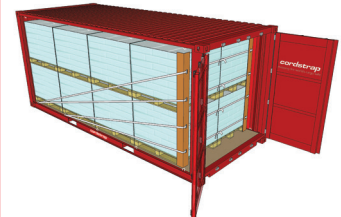
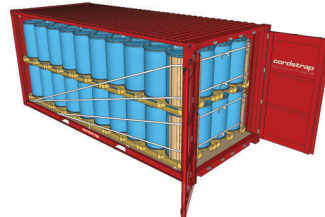
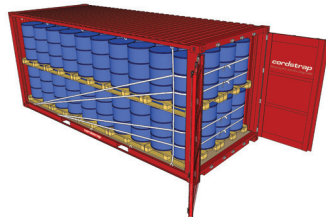


Battery Tensioner  
CBT35



Container Magnets

## Loading plans



We recommend storing all Cordstrap Products in a cool and dry environment out of direct sunlight and between -5°C / 23°F and 104°F. All information given are based on accuracy at time of printing.