

Cordstrap CornerLash®

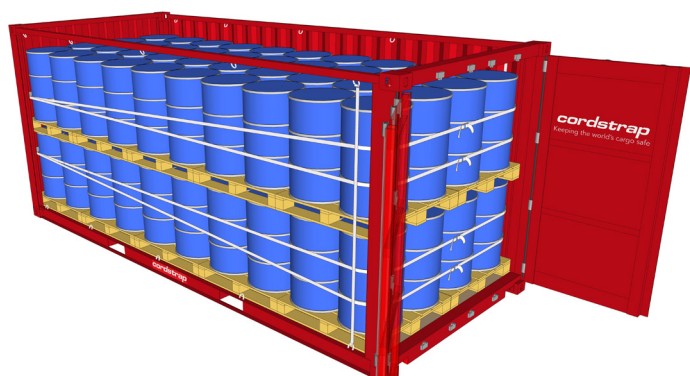
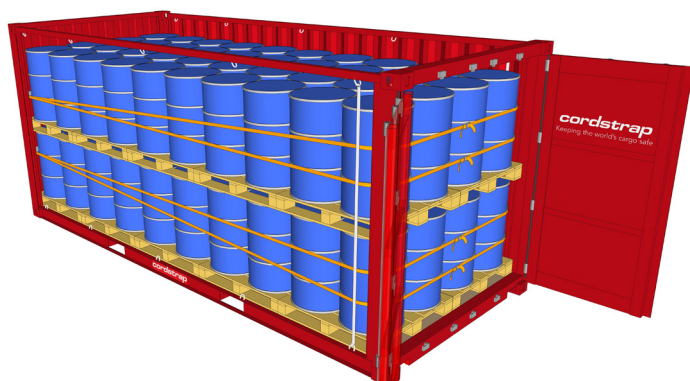
Secure heavy and hazardous cargo loads

CTU Code compliant up to the full container payload

CornerLash® is the fully compliant cargo protection solution for heavy and hazardous loads. To provide optimal securing, this innovative solution uses a patented corner element, creating a new anchorpoint, applied to the strongest part of the container – the corner posts.

CornerLash® is designed to be quick and easy to apply consistently. Delivered in 'Per Container Packaging', preparation is minimal and the solution can be applied by one person, securing your container in minutes, reducing load times and costs.

At Cordstrap, we are committed to supporting and driving safety in our industry. Complying fully with the latest rules and regulations, CornerLash® is CTU Code compliant and has independent witness verification, supporting your responsibilities when shipping nationally or internationally. We understand that each customer has specific requirements, and will work closely with you to understand your needs, advising you on the best solution for your cargo type, modality and route, ensuring your heavy or hazardous cargo gets through port controls smoothly and arrives at its destination safely and in perfect condition.



Cordstrap CornerLash® protects your cargo, your people and your brand



SAFE & SECURE

High quality lashing solutions secure cargo to prevent movement within the container, protecting both the cargo and ensuring the safety of everyone involved in the supply chain.



TIME & COST EFFICIENT

Designed to be easy and quick to apply consistently, saving time and cost during loading and application.



COMPLIANT






All Cordstrap lashing solutions are CTU Code compliant and have independent witness verification.

Specifications Cordstrap Container Solution	 Cordstrap CornerLash® AAR	 Cordstrap CornerLash®
<p>Solution Performance Specifications</p>  <p>1 System</p>  <p>1 Solution</p> <p>CornerLash® Specification System Breaking Strength MSL Solution Breaking Strength Elongation at MSL Required pre-tension Recommended pre-tension</p> <p>Certification</p>	<p>Cordstrap CornerLash® AAR</p> <p>12.000 daN / 26,400 lbf 6.000 daN / 13,200 lbf 24.000 daN / 52,800 lbf <5.5% 3.000 daN / 6,600 lbf -</p> <p>AAR approved, Lloyd's and MariTerm CTU Code Compliant certified Eurosafe Certified</p>	<p>Cordstrap CornerLash®</p> <p>6.000 daN / 13,200 lbf 4.500 daN / 9,900 lbf 12.000 daN / 26,400 lbf <9% - 450-2.250 daN / 1,013 - 5,063 lbf</p> <p>Lloyd's and MariTerm CTU Code Compliant Certified Eurosafe Certified</p>
<p>Corner Element Specification</p>  <p>Breaking Strength MSL Material Pieces required per solution</p>	<p>6.000 daN / 13,200 lbf 3.000 daN / 6,600 lbf Galvanized Steel 4</p>	<p>6.000 daN / 13,200 lbf 3.000 daN / 6,600 lbf Galvanized Steel 4</p>

Edge protection and HangStrap: used to keep the lashing in an optimal position and fully protect your cargo

 <p>Retainer Buckle</p>	 <p>EdgeBoards (soft packaging)</p>	 <p>FlexBoards (drums and big bags)</p>	 <p>IBC Protector</p>	 <p>HangStrap</p>
---	---	---	--	---

Use the recommended tools to enable easy, fast and consistent application

 <p>Manual Tensioner CT40 (2)</p>	 <p>Battery Tensioner CBT35</p>	 <p>Pneumatic Tensioner CT40 PN Cordlash Woven</p>	 <p>Pneumatic Tensioner CT50 PN</p>	 <p>Container Magnets</p>
--	--	---	--	--

Loading plans

 <p>AAR</p>	 <p>AAR</p>	 <p>Non-AAR</p>	 <p>Non-AAR</p>
---	--	---	--

We recommend storing all Cordstrap Products in a cool and dry environment out of direct sunlight and between -5°C and 40°C / 23°F and 104°F. All information given are based on accuracy at time of printing.