

# Cordstrap QuickLash®

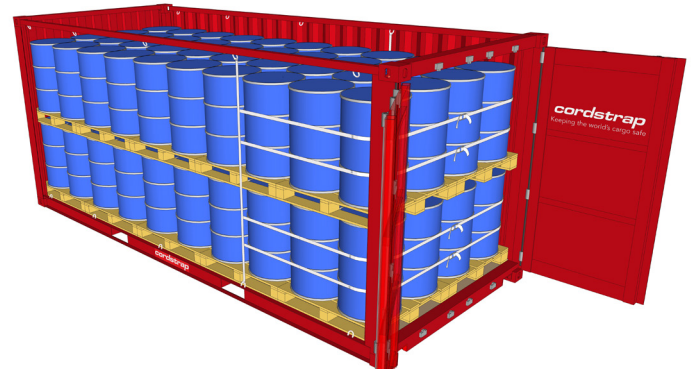
## Secure light cargo loads

### CTU Code compliant up to 9 tons

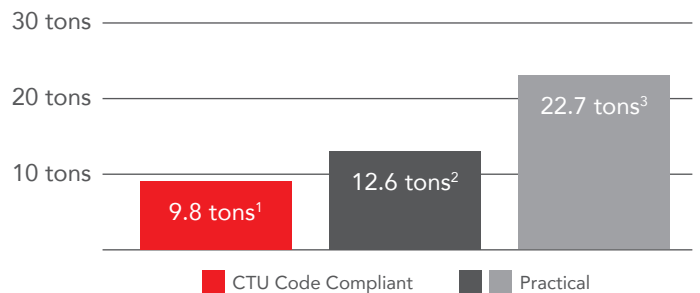
QuickLash® is the economical solution for light loads without compromising on quality, safety or security. Using existing upper and lower lashing points in the container, QuickLash® secures loads using vertical lashing with easy to apply snap hooks, and adjustable horizontal lashing secured with buckles.

Designed to be quick and easy, QuickLash® can be applied by one person, securing a container in minutes. Delivered in 'Per Container Packaging', and pre assembled lashing, preparation time is minimal, helping to reduce load times and costs.

At Cordstrap, we are committed to supporting and driving safety in our industry. The QuickLash® solution provides CTU Code Compliant cargo protection, supporting your responsibilities when shipping nationally or internationally. We understand that each customer has specific requirements, and will work closely with you to understand your needs, advising on both compliant and practical securing weights for your cargo type, modality and route.



Example securing weights, certified by MariTerm AB



1. 20ft CTU / friction factor: 7.7 / Intermodal (sea area C) / Large Big Bags
2. 20ft CTU / friction factor: 7.7 / Intermodal (sea area C) / Drums
3. 20ft CTU / friction factor: 4.5 / Road & Rail (doors to rear) / Drums

Cordstrap QuickLash® protects your cargo, your people and your brand



#### SAFE & SECURE

High quality lashing solutions secure cargo to prevent movement within the container, protecting both the cargo and ensuring the safety of everyone involved in the supply chain.



#### TIME & COST EFFICIENT

Designed to be easy and quick to apply consistently, saving time and cost during loading and application.



#### COMPLIANT

All Cordstrap lashing solutions are CTU Code compliant and have independent witness verification.

## Specifications Cordstrap Container Solution: Cordstrap QuickLash®

### Solution Performance Specifications

Solution Breaking Strength\* 6.000 daN / 13,200 lbf (±10%)  
Solution MSL 4.500 daN / 9,900 lbf (±10%)

**Certification** Mariterm, Eurosafe, DNV-GL witnessed

These figures are based on correct application of the complete solution with anchorpoints that have 2.000 daN / 4,400 lbf MSL and can vary based on application and length/angle of lashing. Please refer to securing certificates for exact values.



### Edge protection: used to keep the lashing in an optimal position and fully protect your cargo



EdgeBoards  
(soft packaging)



FlexBoards  
(drums and big bags)



IBC Protector

### Use the recommended tools to enable easy, fast and consistent application



Manual Tensioner  
CT40 (2)

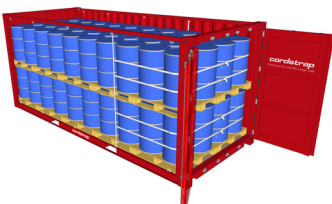


Battery Tensioner  
CBT35



Container Magnets

### Loading plans



We recommend storing all Cordstrap Products in a cool and dry environment out of direct sunlight and between -5°C / 23°F and 104°F. All information given are based on accuracy at time of printing.